

Compact Cylinder | ISO 21287



Compact Cylinder | ISO 21287

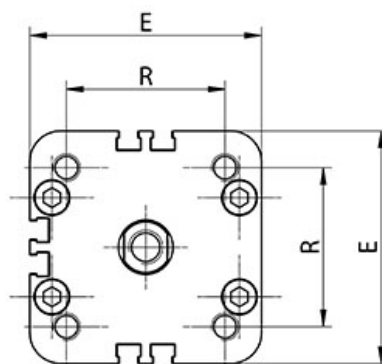
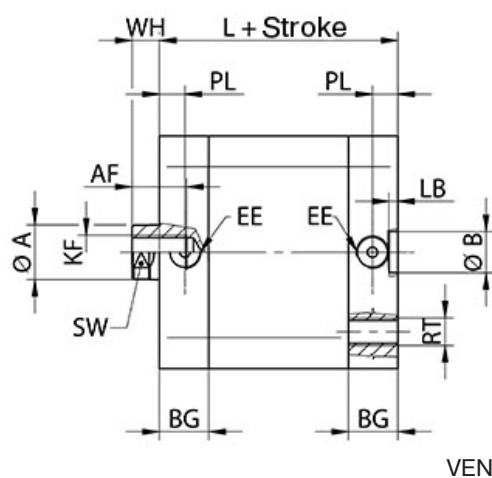
page 28

Technical information	
Diameter	Ø20 - Ø25 - Ø32 - Ø40 - Ø50 - Ø63 - Ø80 - Ø100 mm
Stroke	5- 10 - 25 - 50 - 80 -100 -125 - 160 - 200 - 250 - 320 - 400 mm Single acting Double acting
Medium	Air
Pressure range	1 ... 10 bar
Temperature range	-20°C ... +80°C FPM version 0°C ... +150°C Below 0°C air has to be dried.
Materials	
Tube	Anodized aluminum
Heads	Anodized aluminum
Piston	aluminium
Piston rod	Chromed steel
Guide bushing	Sintered bronze
Seals	PUR, NBR/FPM (depending on type)

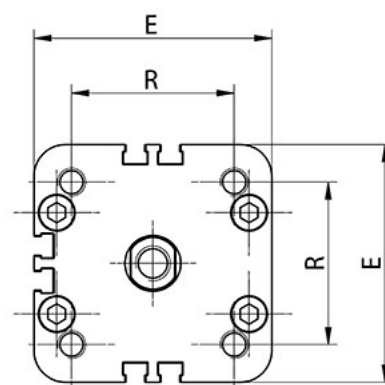
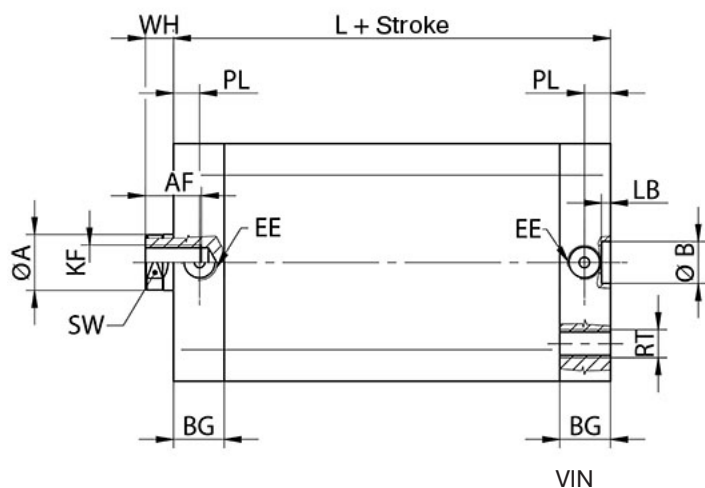
V	I	N	V	20	/	80	Ex
				DIAMETER		STROKE	OPTIONS
				20		5	Ex ATEX version
				25		10	
				32		15	
				40		25	
				50		40	
				63		50	
				80		80	
				100		100	
						125	
						160	
						200	
						250	
						320	
						400	
				SEALS			
				WITHOUT	Standard seals		
				K	FPM Piston		
				H	FPM seals (for type VE)		
				V	FPM seals (for type VI, VB and VINT)		
				VERSION			
				NV	Spring pushes piston rod out, piston rod with female thread (for type VE)		
				FV	Spring pushes piston rod out, piston rod with male thread (for type VE)		
				N	Piston rod with female thread		
				F	Piston rod with male thread		
				NT	Non-rotating piston rod (for type VI)		
				FUNCTION			
				E	Single acting		
				I	Double acting		
				B	Double acting, through piston rod		



VEN/VIN



VEN



VIN

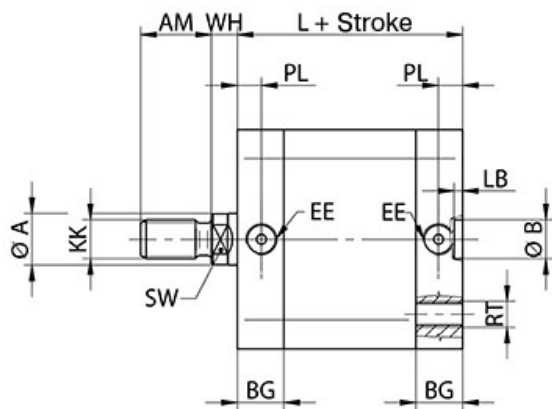
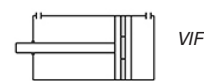
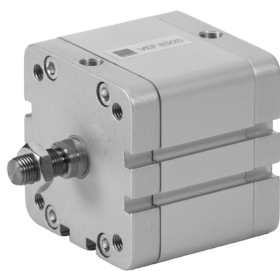
Ø [mm]	A	B	E	L	R	AF	BG	EE	KF	LB	PL	RT	SW	WH
Ø20	10	9	36	37	22	15	-	M5	M6	3	7,5	M5	-	6,5
Ø25	10	9	40	39	26	15	-	M5	M6	3	7,5	M5	-	6
Ø32	12	9	49	44	32,5	12 (15)*	14,5	G1/8"	M8	2,1 (3)*	7,5	M6	10	7 (6,5)*
Ø40	12	9	55 (54,5)*	45	38	12 (15)*	15	G1/8"	M8	2,1 (3)*	7,5 (8)*	M6	10	7
Ø50	16	12	68 (65,5)*	45	46,5	16 (17)*	14,5	G1/8"	M10	2,6 (4)*	7,5 (8)*	M8	13	8
Ø63	16	12	78,5 (77)*	49	56,5	16 (17)*	14	G1/8"	M10	2,6 (4)*	7,5	M8	13	8,5 (8)*
Ø80	20	12	98 (95,5)*	54	72	20	15,5	G1/8"	M12	2,6 (4)*	7,5 (8)*	M10	17	10 (9)*
Ø100	25	12	120 (113,5)*	67	89	20 (22)*	20	G1/8"	M12	2,6 (4)*	7,5 (8)*	M10	22	10

*For cylinders type VENK, VENH, VEFK, VEFH, VENVK, VENVH, VEFVK, VEFVH, VINK, VINV, VIFK, VIFV, VBNK, VBNV, VBFK, VBFV, VINTK, VINTV

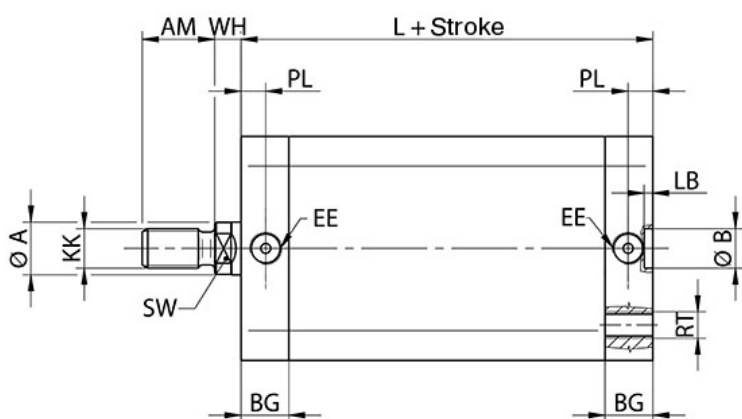
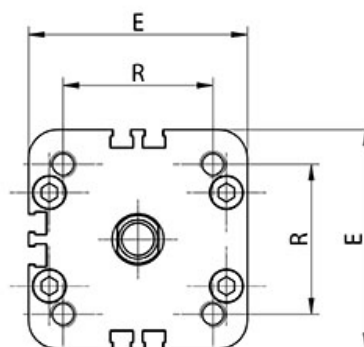


VEF/VIF

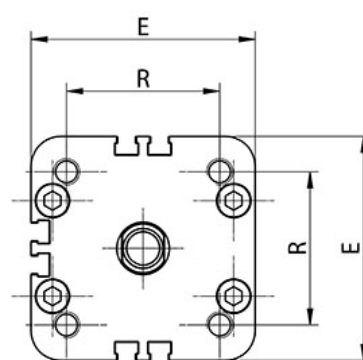
page 30



VEF



VIF

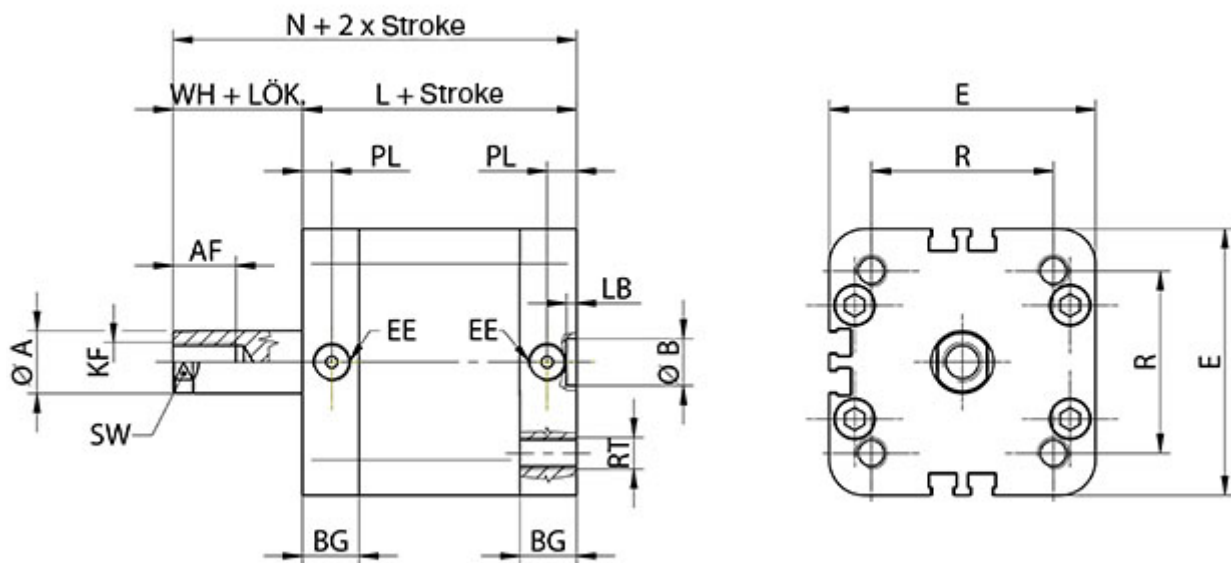
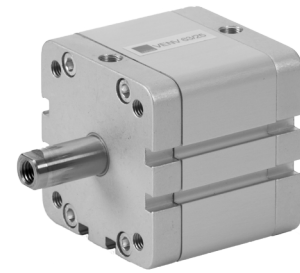


Ø [mm]	A	B	E	L	R	AM	BG	EE	KK	LB	PL	RT	SW	WH
Ø20	10	9	36	37	22	16	-	M5	M8	3	7,5	M5	-	6,5
Ø25	10	9	40	39	26	16	-	M5	M8	3	7,5	M5	-	6
Ø32	12	9	49	44	32,5	19	14,5	G1/8"	M10x1,25	2,1 (3)*	7,5	M6	10	7 (6,5)*
Ø40	12	9	55 (54,5)*	45	38	19	15	G1/8"	M10x1,25	2,1 (3)*	7,5 (8)*	M6	10	7
Ø50	16	12	68 (65,5)*	45	46,5	22	14,5	G1/8"	M12x1,25	2,6 (4)*	7,5 (8)*	M8	13	8
Ø63	16	12	78,5 (77)*	49	56,5	22	14	G1/8"	M12x1,25	2,6 (4)*	7,5	M8	13	8,5 (8)*
Ø80	20	12	98 (95,5)*	54	72	28	15,5	G1/8"	M16x1,5	2,6 (4)*	7,5 (8)*	M10	17 (9)*	10 (9)*
Ø100	25	12	120 (113,5)*	67	89	28	20	G1/8"	M16x1,5	2,6 (4)*	7,5 (10,5)*	M10	22	10



*For cylinders type VENK, VENH, VEFK, VEFH, VENVK, VENVH, VEFVK, VEFVH, VINK, VINV, VIFK, VIFV, VBNK, VBNV, VBFK, VBFV, VINTK, VINTV

VENV



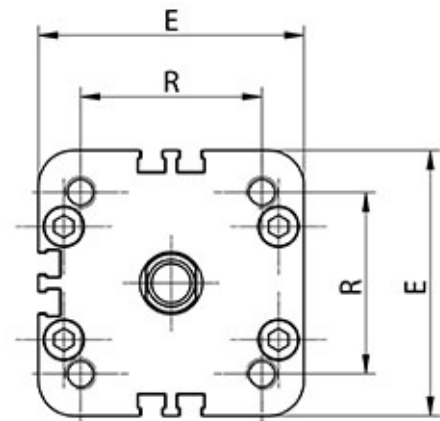
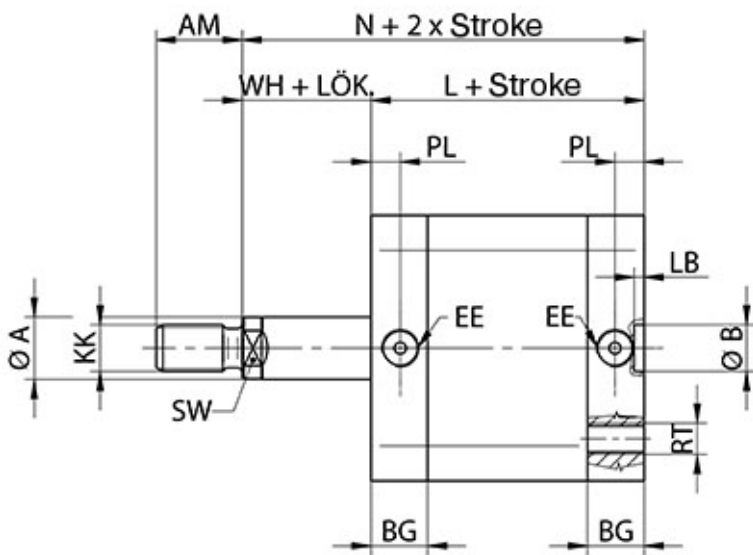
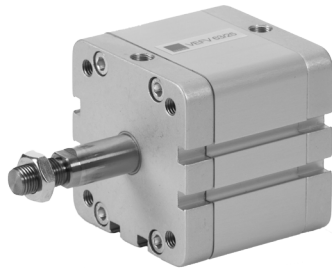
Ø [mm]	A	B	E	L	R	AF	BG	EE	KF	LB	PL	RT	SW	WH
Ø20	10	9	36	37	22	15	-	M5	M6	3	7,5	M5	-	6,5
Ø25	10	9	40	39	26	15	-	M5	M6	3	7,5	M5	-	6
Ø32	12	9	49	44	32,5	12 (15)*	14,5	G1/8"	M8	2,1 (3)*	7,5	M6	10	7 (6,5)*
Ø40	12	9	55 (54,5)*	45	38	12 (15)*	15	G1/8"	M8	2,1 (3)*	7,5 (8)*	M6	10	7
Ø50	16	12	68 (65,5)*	45	46,5	16 (17)*	14,5	G1/8"	M10	2,6 (4)*	7,5 (8)*	M8	13	8
Ø63	16	12	78,5 (77)*	49	56,5	16 (17)*	14	G1/8"	M10	2,6 (4)*	7,5	M8	13	8,5 (8)*
Ø80	20	12	98 (95,5)*	54	72	20	15,5	G1/8"	M12	2,6 (4)*	7,5 (8)*	M10	17	10 (9)*
Ø100	25	12	120 (113,5)*	67	89	20 (22)*	20	G1/8"	M12	2,6 (4)*	7,5 (8)*	M10	22	10

*For cylinders type VENK, VENH, VEFK, VEFH, VENVK, VENVH, VEFVK, VEFVH, VINK, VINV, VIFK, VIFV, VBNK, VBNV, VBFK, VBFV, VINTK, VINTV



VEFV

page 32

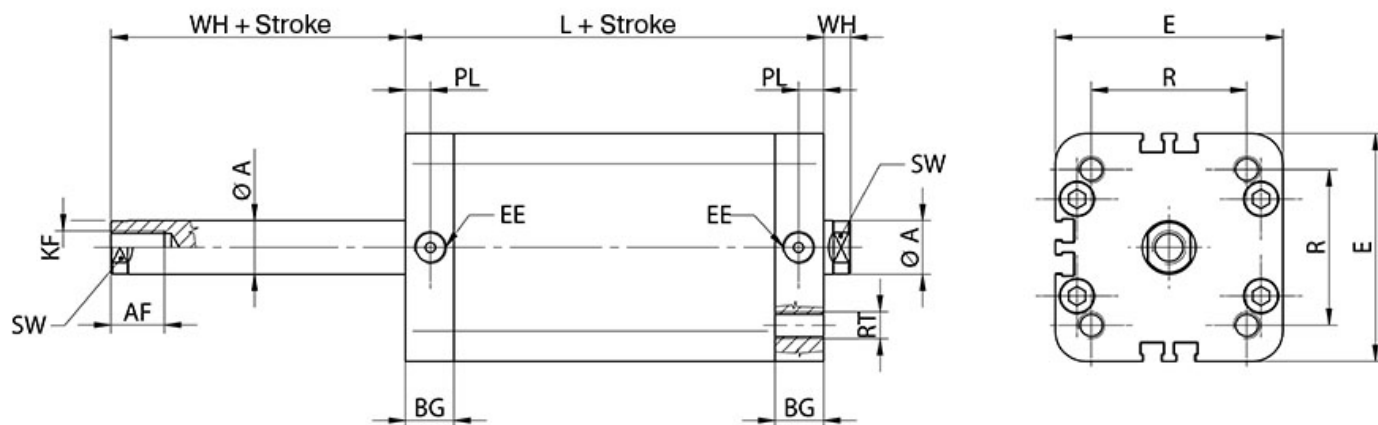
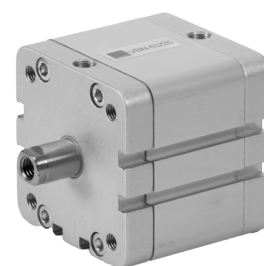
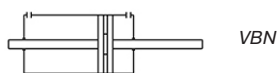


Ø [mm]	A	B	E	L	R	AM	BG	EE	KK	LB	PL	RT	SW	WH
Ø20	10	9	36	37	22	16	-	M5	M8	3	7,5	M5	-	6,5
Ø25	10	9	40	39	26	16	-	M5	M8	3	7,5	M5	-	6
Ø32	12	9	49	44	32,5	19	14,5	G1/8"	M10x1,25	2,1 (3)*	7,5	M6	10	7 (6,5)*
Ø40	12	9	55 (54,5)*	45	38	19	15	G1/8"	M10x1,25	2,1 (3)*	7,5 (8)*	M6	10	7
Ø50	16	12	68 (65,5)*	45	46,5	22	14,5	G1/8"	M12x1,25	2,6 (4)*	7,5 (8)*	M8	13	8
Ø63	16	12	78,5 (77)*	49	56,5	22	14	G1/8"	M12x1,25	2,6 (4)*	7,5	M8	13	8,5 (8)*
Ø80	20	12	98 (95,5)*	54	72	28	15,5	G1/8"	M16x1,5	2,6 (4)*	7,5 (8)*	M10	17 (9)*	10 (9)*
Ø100	25	12	120 (113,5)*	67	89	28	20	G1/8"	M16x1,5	2,6 (4)*	7,5 (10,5)*	M10	22	10



*For cylinders type VENK, VENH, VEFK, VEFH, VENVK, VENVH, VEFVK, VEFVH, VINK, VINV, VIFK, VIFV, VBNK, VBNV, VBFK, VBFV, VINTK, VINTV

VBN



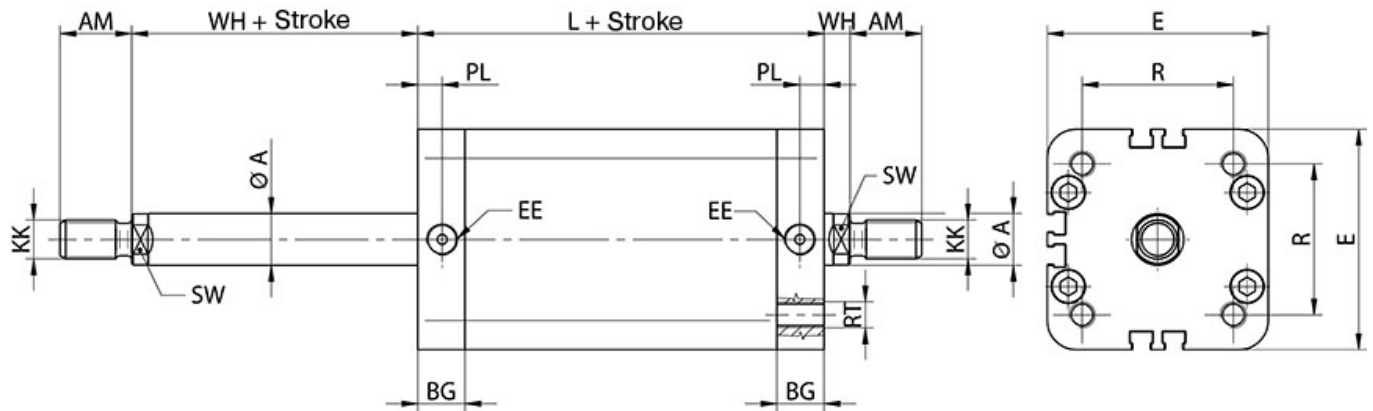
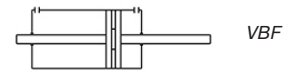
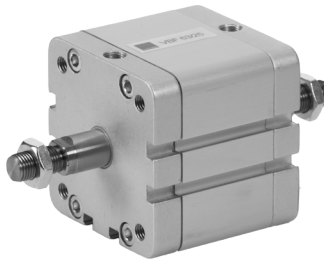
Ø [mm]	A	E	L	R	AF	BG	EE	KF	PL	RT	SW	WH
Ø20	10	36	37	22	15	-	M5	M6	7,5	M5	-	6,5
Ø25	10	40	39	26	15	-	M5	M6	7,5	M5	-	6
Ø32	12	49	44	32,5	12 (15)*	14,5	G1/8"	M8	7,5	M6	10	7 (6,5)*
Ø40	12	55 (54,5)*	45	38	12 (15)*	15	G1/8"	M8	7,5 (8)*	M6	10	7
Ø50	16	68 (65,5)*	45	46,5	16 (17)*	14,5	G1/8"	M10	7,5 (8)*	M8	13	8
Ø63	16	78,5 (77)*	49	56,5	16 (17)*	14	G1/8"	M10	7,5	M8	13	8,5 (8)*
Ø80	20	98 (95,5)*	54	72	20	15,5	G1/8"	M12	7,5 (8)*	M10	17	10 (9)*
Ø100	25	120 (113,5)*	67	89	20 (22)*	20	G1/8"	M12	7.5 (10,5)*	M10	22	10

*For cylinders type VENK, VENH, VEFK, VEFH, VENVK, VENVH, VEFVK, VEFVH, VINK, VINV, VIFK, VIFV, VBNK, VBNV, VBFK, VBFV, VINTK, VINTV



VBF

page 34

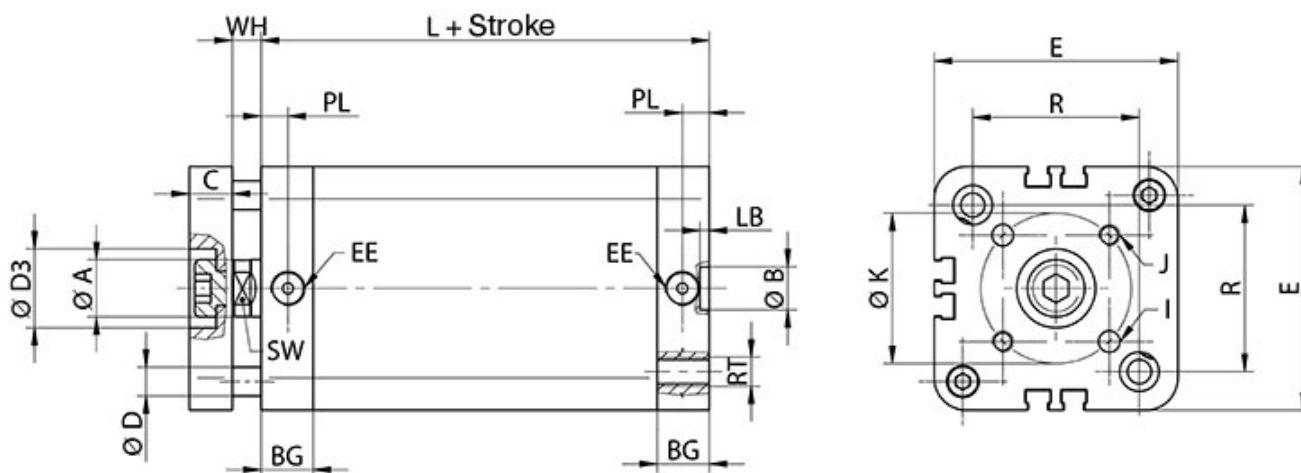
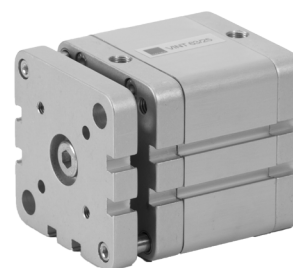
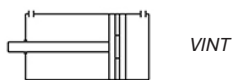


Ø [mm]	A	E	L	R	AM	BG	EE	KK	PL	RT	SW	WH
Ø20	10	36	37	22	16	-	M5	M8	7,5	M5	-	6,5
Ø25	10	40	39	26	16	-	M5	M8	7,5	M5	-	6
Ø32	12	49	44	32,5	19	14,5	G1/8"	M10x1,25	7,5	M6	10	7 (6,5)*
Ø40	12	55 (54,5)*	45	38	19	15	G1/8"	M10x1,25	7,5 (8)*	M6	10	7
Ø50	16	68 (65,5)*	45	46,5	22	14,5	G1/8"	M12x1,25	7,5 (8)*	M8	13	8
Ø63	16	78,5 (77)*	49	56,5	22	14	G1/8"	M12x1,25	7,5	M8	13	8,5 (8)*
Ø80	20	98 (95,5)*	54	72	28	15,5	G1/8"	M16x1,5	7,5 (8)*	M10	17	10 (9)*
Ø100	25	120 (113,5)*	67	89	28	20	G1/8"	M16x1,5	7.5 (10,5)*	M10	22	10



*For cylinders type VENK, VENH, VEFK, VEFH, VENVK, VENVH, VEFVK, VEFVH, VINK, VINV, VIFK, VIFV, VBNK, VBNV, VBFK, VBFV, VINTK, VINTV

VINT



Ø [mm]	A	B	BG	C	D	D3	E	I	J
Ø20	10	9	-	8	5	11	36	4	M4
Ø25	10	9	-	8	6	14	40	5	M5
Ø32	12	9	14,5	10	6	17	49	5	M5
Ø40	12	9	15	10	6 (8)*	17	55 (54,5)*	5	M5
Ø50	16	12	14,5	12	8 (10)*	22	68 (65,5)*	6	M6
Ø63	16	12	14	12	8 (10)*	22	78,5 (77)*	6	M6
Ø80	20	12	15,5	14	12 (14)*	24 (28)*	98 (95,5)*	8	M8
Ø100	25	12	20	14	12 (14)*	24 (30)*	120 (113,5)*	10	M10

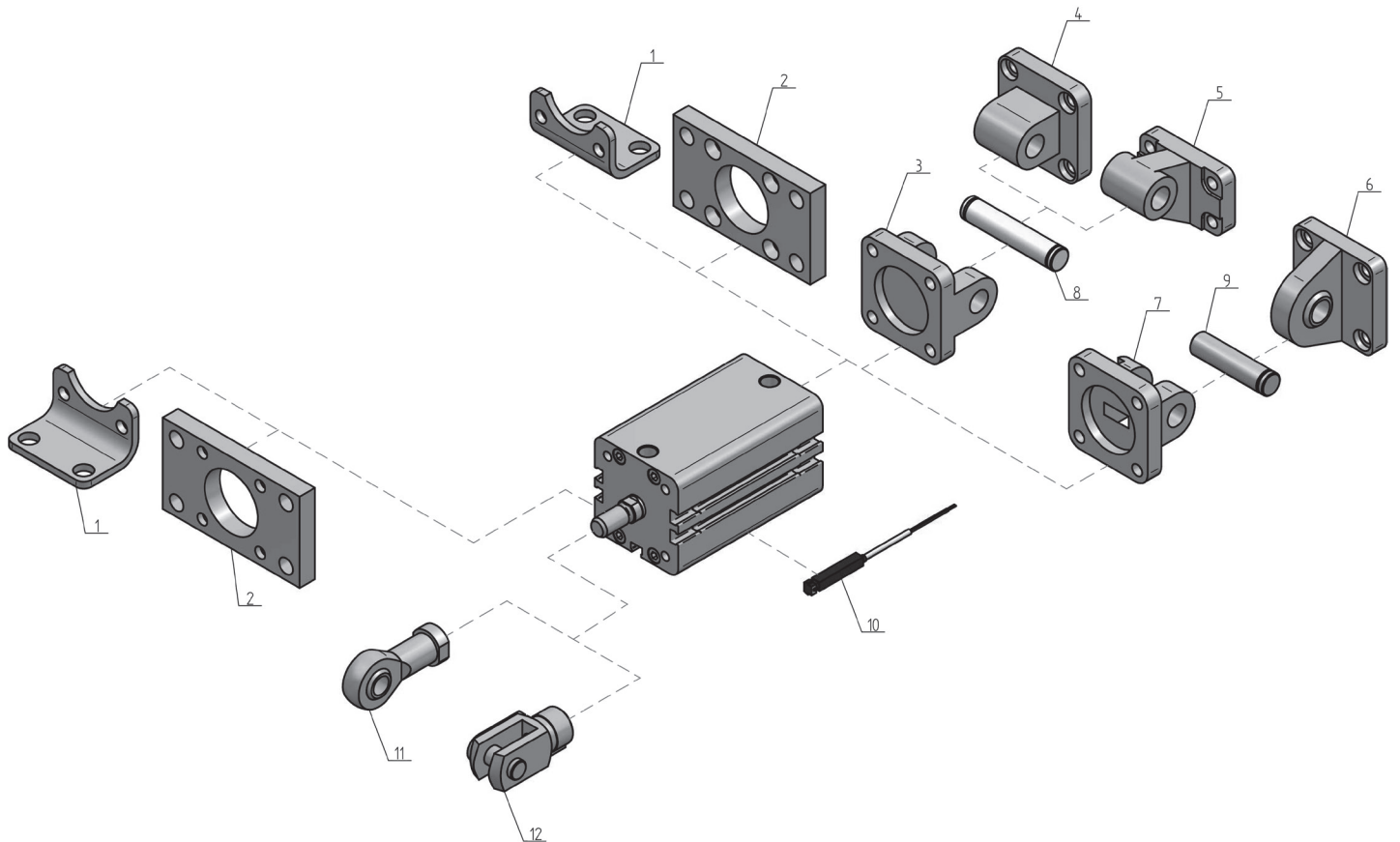
Ø [mm]	K	L	R	EE	LB	PL	RT	SW	WH
Ø20	-	37	22	M5	3	7,5	M5	-	6,5
Ø25	-	39	26	M5	3	7,5	M5	-	6
Ø32	28	44	32,5	G1/8"	7 (3)*	7,5	M6	10	7 (6,5)*
Ø40	33	45	38	G1/8"	7 (3)*	7,5 (8)*	M6	10	7
Ø50	42	45	46,5	G1/8"	8 (4)*	7,5 (8)*	M8	13	8
Ø63	50	49	56,5	G1/8"	8,5 (4)*	7,5	M8	13	8,5 (8)*
Ø80	65	54	72	G1/8"	10 (4)*	7,5 (8)*	M10	17	10 (9)*
Ø100	80	67	89	G1/8"	10 (4)*	7,5 (10,5)*	M10	22	10

*For cylinders type VENK, VENH, VEFK, VEFH, VENVK, VENVH, VEFVK, VEFVH, VINK, VINV, VIFK, VIFV, VBNK, VBNV, VBFK, VBFV, VINTK, VINTV



Accessories Compact Cylinder | ISO 21287

page 36



Part	Type	Description	Page
1	DL	Foot mounting	136
2	DF	Flange	135
3	DG	Female hinge	137
4	DH	Male hinge	138
5	DW	Square hinge	140
6	DKL	Male hinge with ball joint	140
7	DGS	Narrow female hinge	137
8	DC	Pin for hinge	141
9	DCS	Pin for narrow hinge	141
10	SKR/SKH	REED / PNP switch	144
11	UK	Rod eye with internal thread	130
11	UKF	Rod eye with external thread	128
12	UV	Clevis with lockable pin	129